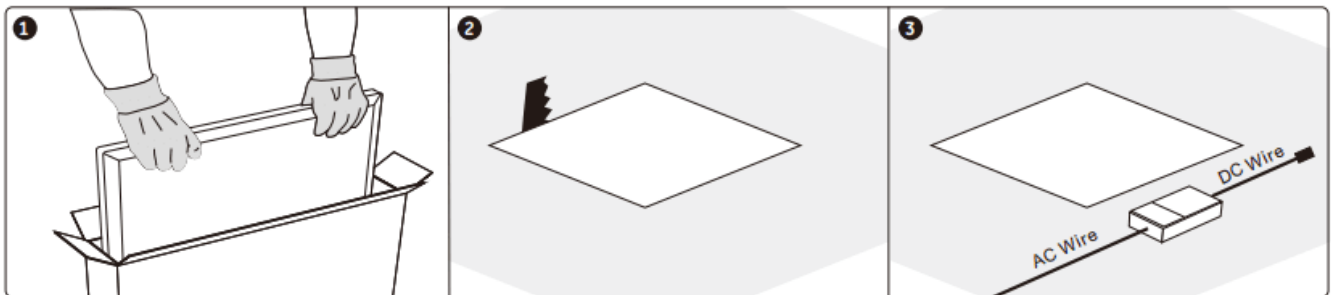


- Installation and wiring of luminaire must be in accordance with all applicable local codes.
- Installation, inspection, and maintenance of luminaires should be performed by a qualified electrician.
- DO NOT make or alter any open holes in the luminaire. Do not modify the luminaire.
- DO NOT install damaged product.
- Make sure electrical power is OFF before and during installation and maintenance.
- Make sure the equipment is properly grounded.
- Make sure the supply voltage is same as the rated fixture voltage.

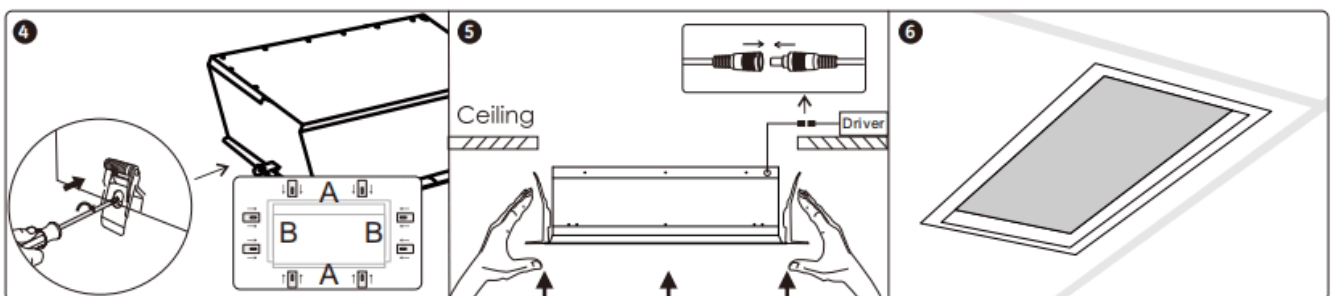
Recessed Plasterboard Cut Hole Ceiling Installation



1 Take the panel out of the box and protective bag. Remove the protective film.

2 Cut a square hole in the ceiling 10mm smaller than the LED Panel.

3 Connect the LED Driver to AC mains.



4 Screw the springs. (optional Locked by default.)
If String Closely installation, need to change the position of the springs.

5 Connect the DC connector from driver to panel.
Push the Light into the ceiling with the springs raised. Pay attention to the direction of light.

6 Tear off the protective film of the lampshade and turn on the skylight.

Installation Location

